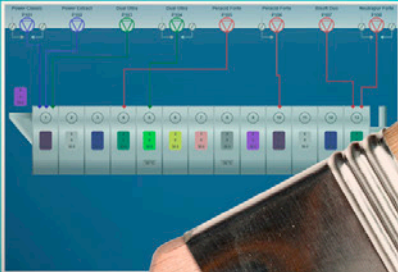


DO YOU HAVE THE RIGHT
TOOLS FOR ACCURATE
DOSING & MONITORING?



FLUX-STAR^{LXP}

Central dosing system with integrated MIS for dosing liquid detergents to tunnel washers or a combination of tunnel washers and washer extractors

RELIABLE PERFORMANCE

OPTIMAL FLEXIBILITY

COMPACT SYSTEM

FULL MONITORING & REPORTING

OPTIMAL SAFETY

PASSIONATE ABOUT LAUNDRY



CHRISTEYNS
LAUNDRY TECHNOLOGY



FLUX-STAR^{LXP}

Flux-Star^{LXP} is a compact central dosing system with **integrated Management Information System 'Laundry X-pert'**, for the automatic dosing of liquid detergents to tunnel washers (TW) or to a combination of TW and washer extractors (WE). As the system is **pre-assembled**, installation is very easy and the laundry does not lose valuable production time.

Flux-Star^{LXP} main benefits are :

Optimal flexibility



- Choice between 8 or 12 pump cabinet
- Flux-Star^{LXP} can be expanded with regular Flux-Star cabinets in **master/slave** configuration
- Different **pump pressures** and **dosing capacities** available
- Various **options** available for customisation
- Modular MIS : **Laundry X-pert**
 - 1 module = monitoring 1 TW or 1-15 WE
 - Maximum = 4 modules



LAUNDRY X-PERT

Compact system



- **Laundry X-pert** MIS integrated in Flux-Star cabinet
 - No separate software cabinet needed
- Up to **12 chemical pumps** in one cabinet!

Reliable performance



- Quality **membrane pumps**
 - Stable performance
 - Little maintenance
- **Flow Control** unit to check chemical dosing
- Pressure retention valve to assure counter-pressure & guarantee **constant flowrates**
- **Calibration** with sample valves

Full monitoring & reporting



- Real-time information about the chemicals, the wash process and the meter loggings
- Reporting (real-time and historical data) on:
 - Total costs
 - KPI's (general and per TW/WE)
 - Alarm & warning messages
 - Benchmarking between laundries of the same group possible

Optimal safety



- **Closed cabinet** to prevent contact with chemicals
- Transparent plexi cover for clear view on functioning of Flux-Star^{LXP}
- No chemical in machine after dosing thanks to rinse with **water and air** after each dosing
- IP 4x protected electrical cabinet (CE-certificate)

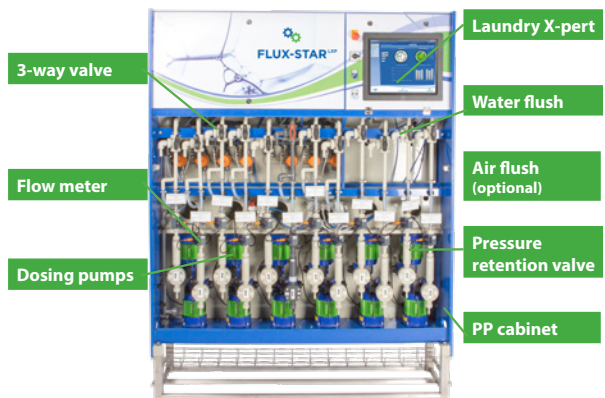
Application



| | |
|-------------------|---|
| Type of laundries | Midsized & large |
| Type of system | Central dosing system |
| Machines | For any type of TW and WE |
| Dosing lines | Dosing lines combined in manifolds (max. 5/manifold) - Per main dosing point in TW - Per type of chemical (alkalines, acids,...) |
| Products | Max. 12 liquid chemicals/cabinet |



Components



Technical data

| Flux-Star ^{LXP} 12 pumps | |
|-----------------------------------|---|
| HxWxD | H 2025 mm x W 1576 mm x D 495 mm |
| Weight : | Max. 200 kg |
| M i d d o s diaphragm Pumps : | - max. pressure = 5 bar - limited transport distance - 24 - 48 - 80 or 120 l/h - maximum 12 pumps in cabinet 12 |
| M e m d o s diaphragm pumps | - max. pressure = 10 bar - to bridge longer transport distances - 20 - 60 - 80 or 150 l/h - max. 6 pumps in cabinet 12 |

Benefits

- Optimal flexibility
- Compact system
- Reliable performance
- Full monitoring & reporting
- Optimal safety